

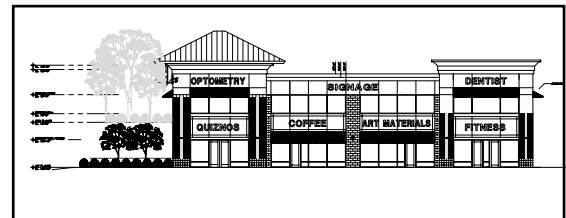
# SPACE AVAILABLE FOR LEASE



7500 80TH STREET SO.  
COTTAGE GROVE, MINNESOTA

## Location

- Excellent visibility and access from 80th Street, the main commercial corridor in Cottage Grove
- Traffic counts of 21,000 VPD
- Conveniently located next to major retail destinations such as Home Depot, Kohl's, Rainbow Foods and Walgreens



## Other Features Include

- Building zoning can accommodate medical, office, retail and restaurant tenants
- Prominent signage on building storefront for all tenants
- Ample surface parking



## Demographics

2006 Estimated	3 Miles	5 Miles
Population	36,053	79,645
Average Household Income	\$92,483	\$97,123
Median Household Income	\$79,852	\$79,862



**MFC**

PROPERTIES CORPORATION

YANKEE SQUARE OFFICE II

3470 WASHINGTON DRIVE

SUITE 102

EAGAN, MN 55122

FAX: (651)452-3362

PHONE: (651)452-3303

www.mfcproperties.com

PROPERTY OWNERSHIP



DEVELOPMENT



PROPERTY MANAGEMENT



BROKERAGE

